



**WATER QUALITY ASSESSMENT**

**Highway 18 Fuel Spill  
September 4, 2006  
San Bernardino National Forest**

**October 31, 2007**

Prepared For:

**U.S.D.A. FOREST SERVICE  
SAN BERNARDINO NATIONAL FOREST  
1209 Lytle Creek Road  
Lytle Creek, CA 92358**

Prepared By:

**ROKEN ENGINEERING SERVICES  
443 Anson Avenue  
Rohnert Park, California 94928**

**ROKEN Project No. KAI-0097**

443 Anson Avenue  
Rohnert Park, CA 94928  
T: (707) 664-0560  
F: (707) 664-8893  
[info@rokenllc.com](mailto:info@rokenllc.com)

October 31, 2007

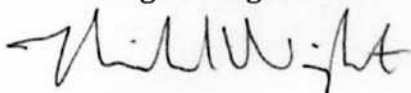
U.S.D.A. Forest Service  
San Bernardino National Forest  
1209 Lytle Creek Road  
Lytle Creek, CA 92358

RE: WATER QUALITY ASSESSMENT  
Highway 18 Gasoline Spill - September 4, 2006  
San Bernardino National Forest  
ROKEN Project No. KAI-0097

ROKEN Engineering Services (ROKEN) has completed the prescribed Water Quality Assessment for the above referenced site. The primary purpose of this assessment was to evaluate the environmental conditions resulting from a September 2006 truck accident that released gasoline into a ravine in the San Bernardino National Forest. The report is comprehensive, presenting pertinent details regarding the planning and execution of the workplan, field test and analytical results, the rationale applied to evaluate the results, and conclusions and recommendations.

We appreciate the opportunity to provide these services. Please contact us at your convenience, should you have any questions or comments regarding the information presented in this report.

Sincerely,  
**ROKEN Engineering Services**



Michael Wright  
Principal-Operations Manager



*Expires October 31, 2009*

ii

RISK MANAGEMENT

CONSTRUCTION  
MANAGEMENT

ENVIRONMENTAL  
SCIENCE & ENGINEERING

NATURAL RESOURCE  
ASSESSMENT

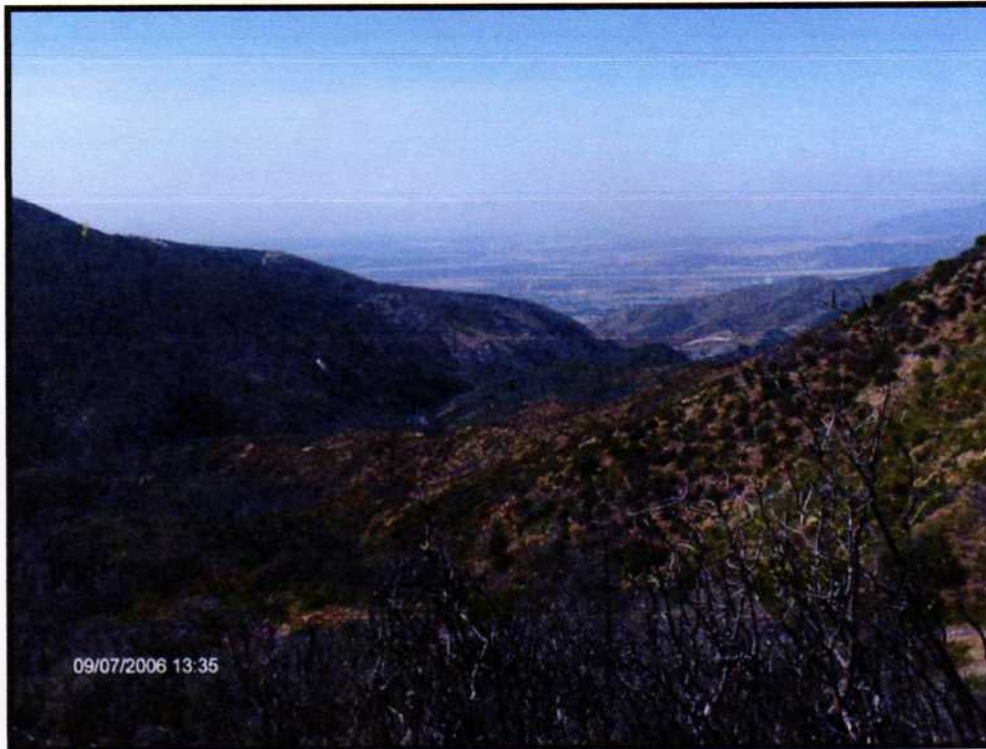


Photo 3: View southwest from top of Ravine. Devil Canyon leading to Resort and State Water Project - Inland Feeder and DWR Power Plant..



Photo 4: View south – East Fork of Devil Canyon Creek (foreground) and Pine Creek Resort (background).

